

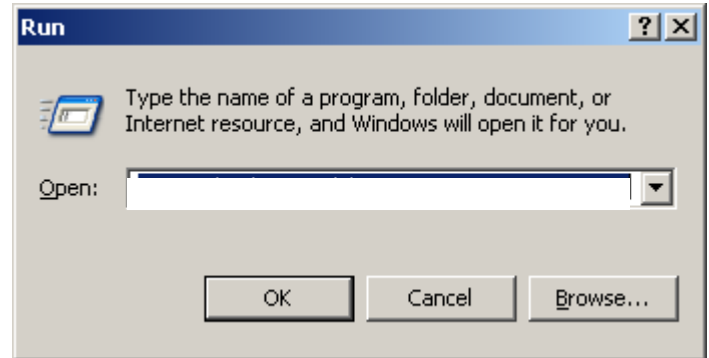
Installing the Black/White printer to your laptop.

Note: When your password expires you will need to delete and reinstall the printer because your password is embedded during the installation.

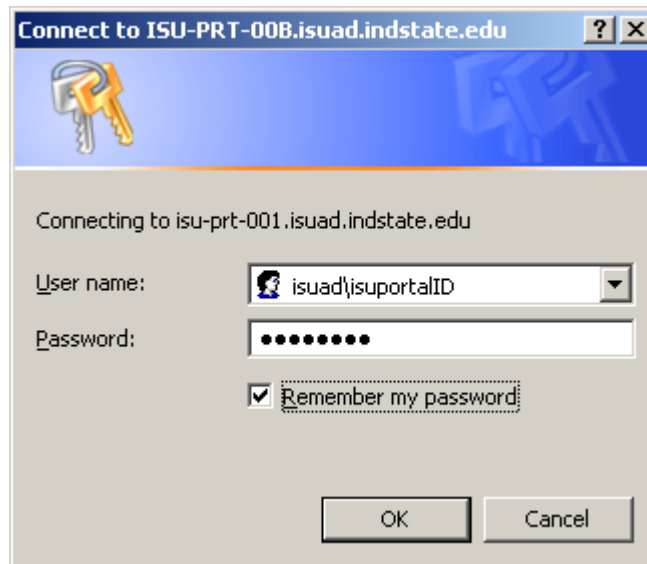
WINDOWS Workstation not in the domain printer installs

1. Press Start (or the Windows button).
2. Click Run (or type Run into the search box, then click Run.)
3. In the dialog box, type in

`\\isu-prt-001.isuad.indstate.edu\LAB_Black_and_White-MS`



4. Wait for system to find printer; this may take 3 to 5 minutes.
5. In the "Connect" box type in `isuad\your portal ID` and your password. **NOTE: Make sure you choose "Remember my password" or you will not be able to print. Microsoft does not give you a login prompt!**



6. Then wait and say "**Yes**" to the prompt. This may take some time because the print driver is installing on your system.



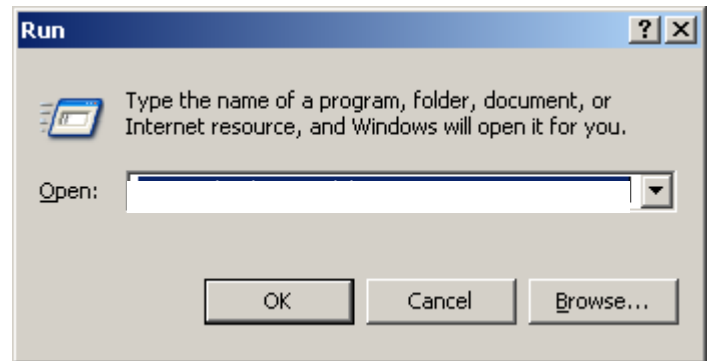
Installing the Color printer to your laptop.

Note: When your password expires you will need to delete and reinstall the printer because your password is embedded during the installation.

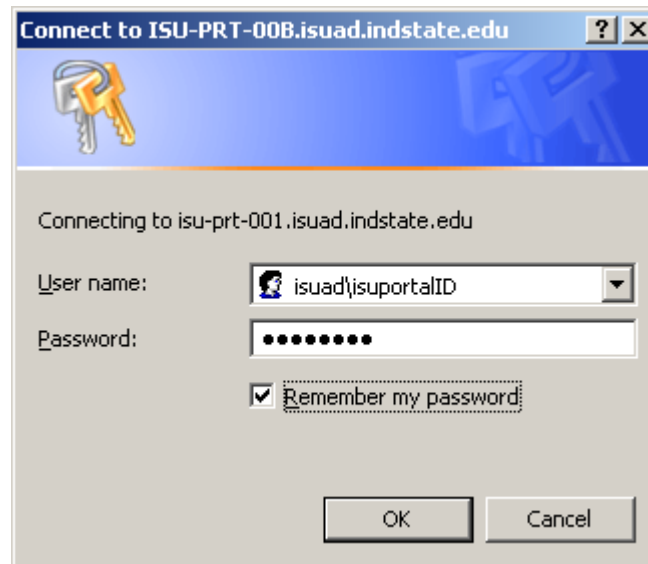
WINDOWS Workstation not in the domain printer installs

4. Press Start (or the Windows button).
5. Click Run (or type Run into the search box, then click Run.)
6. In the dialog box, type in

`\\isu-prt-001.isuad.indstate.edu\LAB_Color-MS`



7. Wait for system to find printer; this may take 3 to 5 minutes.
8. In the "Connect" box type in `isuad\your portal ID` and your password. **NOTE: Make sure you choose "Remember my password" or you will not be able to print. Microsoft does not give you a login prompt!**



9. Then wait and say "Yes" to the prompt. This may take some time because the print driver is installing on your system.

